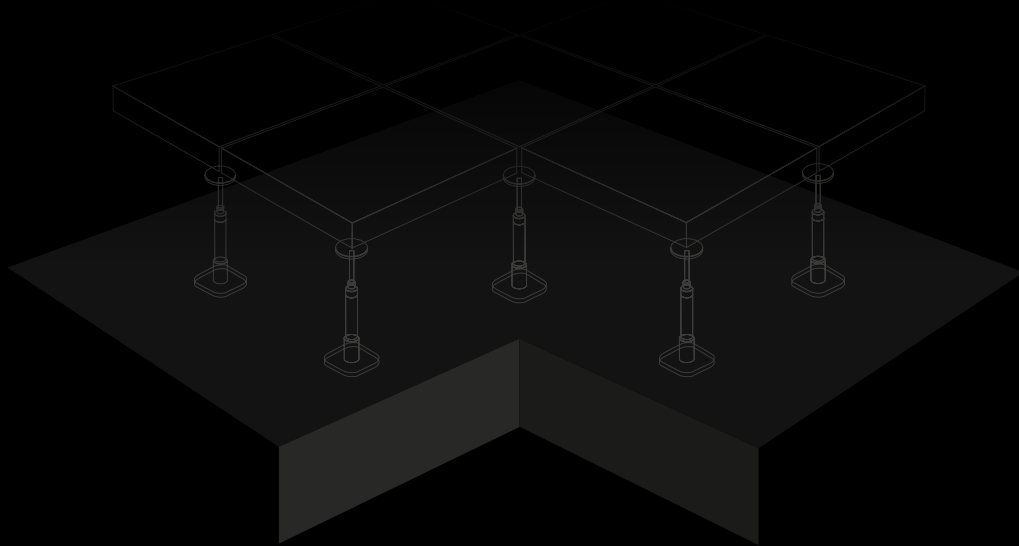


DECO | LEVEL

PedestalSystem



RAISED FLOOR SYSTEM



Raised Floor System

DECOLEVEL pedestal system is a solution both for indoor and outdoor areas.

Pedestals are ideal for residential or commercial use. Can be used safely in places such as terraces, balconies, rooftops, sun lounges, verandas, swimming pool areas, parks, villas, gardens, information processing centers, distribution companies, call centers, education facilities where intense human traffic is available.

This system can be used in various applications with a variety of tiles (ceramics, stone, composite, metal, fiberglass and wood), up to 3/4" thick.



Basic Series

Basic Series can be used to create raised floors at varying heights from 1 1/4" (32mm) up to 10" (250mm) on flat or sloped surfaces.



BS60

Used in tile applications to create raised floors with natural stone, ceramic and composite flooring materials.

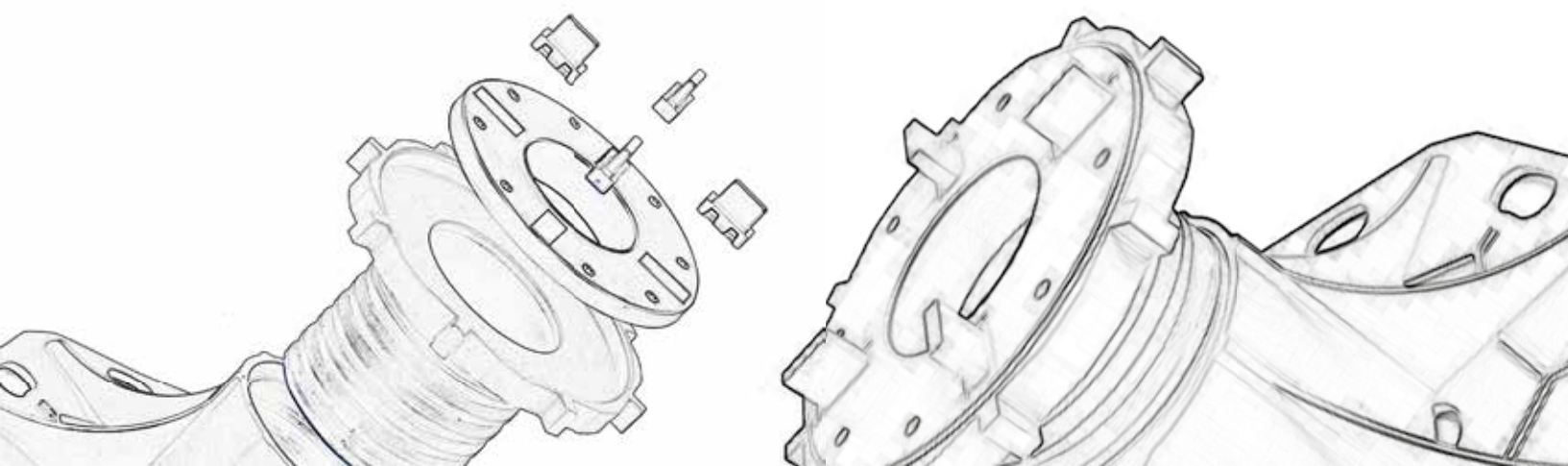
What are the advantages?

<p>They avoid the appearance of pipes and cables</p>	<p>They absorb structural moves and avoid deformations</p>	<p>Less weight in buildings</p>	<p>Leveling operation is much easier and healthier</p>	<p>Fast application and saving on time</p>
<p>Fast water drainage</p>	<p>Faster and easier heat flow</p>	<p>High strength against breakage</p>	<p>Sound isolation</p>	<p>Ecologically Clean</p>

In outdoor applications you can create a joint gap of between tiles ranging from 5/64" (2mm) up to 5/32" (4mm) to facilitate rainwater drainage.

Made from 100% eco-friendly material.

Withstand extreme weather conditions within temperature ranging from -40°F (-40°C) to 176°F (80°C).



BSW60

Applied with wood or aluminum joists to install raised floors from wooden and composite deck flooring materials.



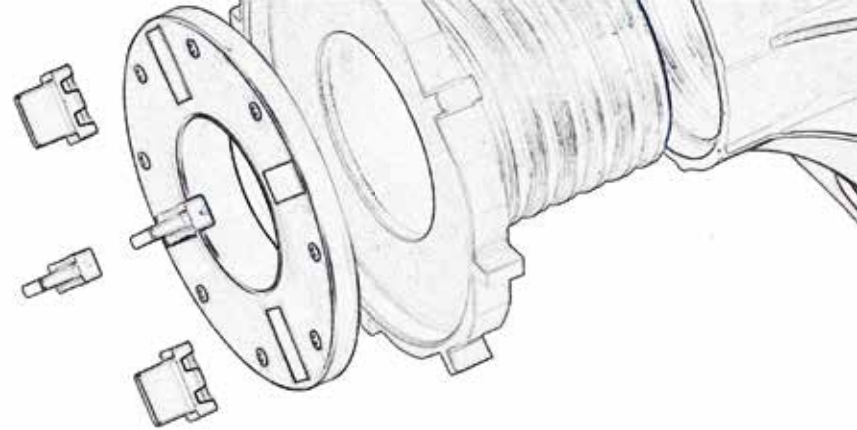
SL60

Used with self-leveling system in tile applications for raised floors. Allows auto slope correction on surfaces maximum up to 5% gradient.

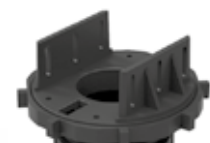


SLW60

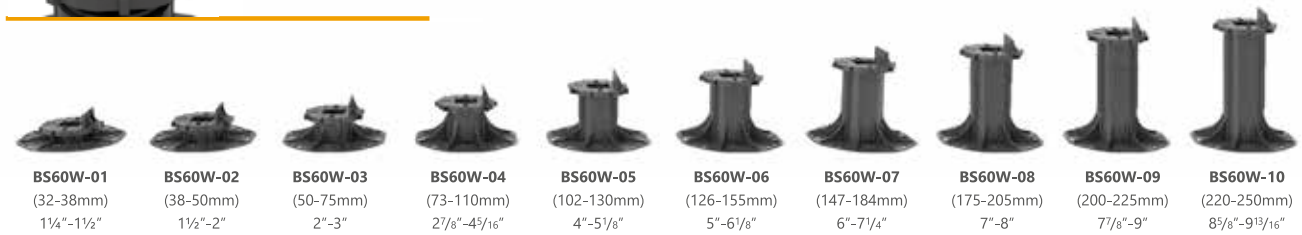
Used in raised floor applications with self-leveling system through wood and aluminum joists. This will allow wooden and composite deck flooring materials to be installed easily. Auto slope correction on surfaces maximum up to 5% gradient.



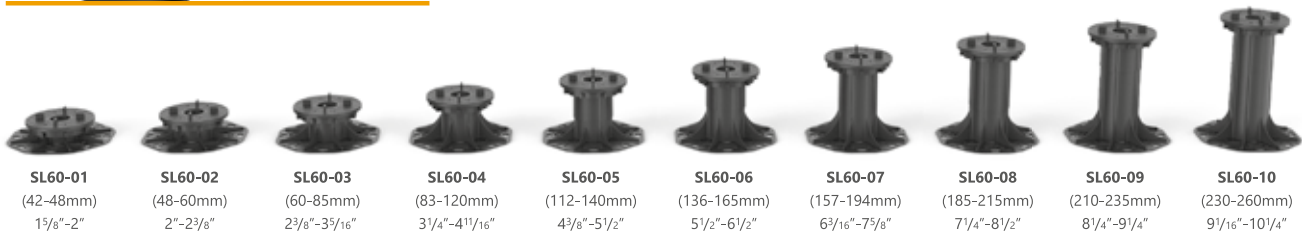
BS60



BSW60



SL60



SLW60



BS60

BS60 can be used to create raised floors at varying heights from 1¼" (32mm) up to 10" (250mm) on flat or uneven surfaces.

Our products are made from 100% eco-friendly raw materials.

Withstand extreme weather conditions within temperature ranging from -40°F (-40°C) to 176°F (80°C).

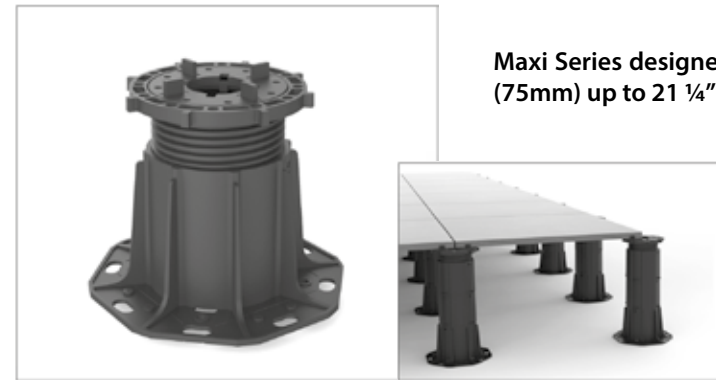
It is recommended to use a fifth support at the center of the tile to ensure to distribute the load equally.





Maxi Series

Maxi Series designed to create elevated floors at varying heights from 3" (75mm) up to 21 1/4" (540mm) on flat or uneven surfaces.



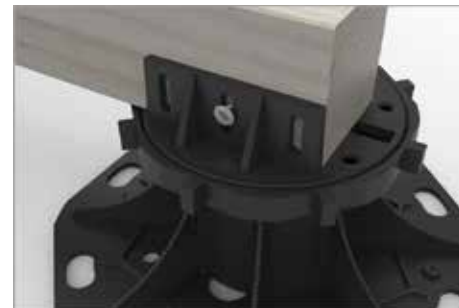
BS110

Used in tile applications to create raised floors with natural stone, ceramic and composite flooring materials.

BSW60

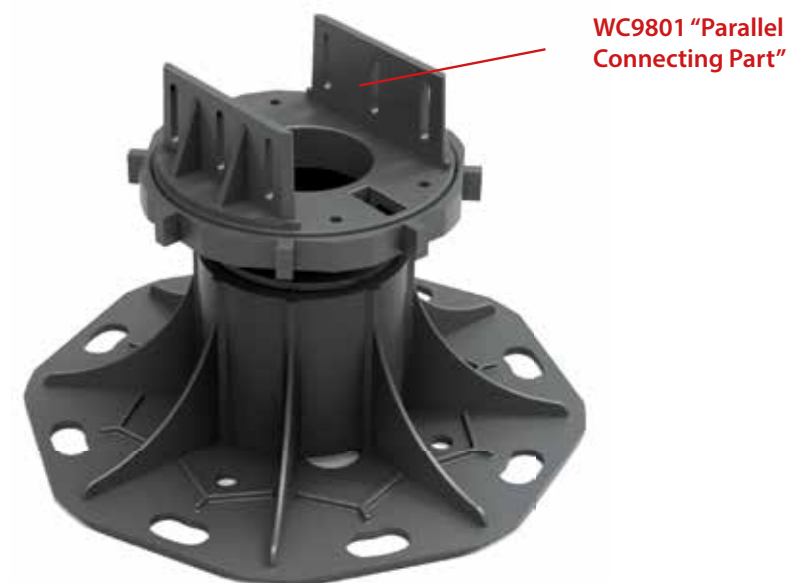
BSW60 are designed for wooden and composite deck flooring materials.

BS60 is versatile and can be converted into a BSW60. Removing the tabs out from their holes and putting the parallel connecting part WC9801 instead of them BS60 will be changed into BSW60. Wooden or aluminum floor joists can be fixed to parallel connecting part WC9801 to create the required flooring frame work on the ground on which the installation materials can be applied.



BSW60 Series can be used to create raised floors at varying heights from 1 1/4" (32mm) up to 10" (250mm) on flat or uneven surfaces.

Can be used safely in applications such as terraces, balconies, rooftops, sun lounges, verandas, swimming pool areas, parks, villas where intense human traffic is available.



WC9801 "Parallel Connecting Part"



BSW110

Applied with wood or aluminum joists to install raised floors with wooden and composite deck flooring materials.



SL110

Used with self-leveling system in tile applications of raised floors. Allows auto slope correction on surfaces maximum up to 5% gradient.



SLW110

Used in raised floor applications with self-leveling system through wood and aluminum joists. This allows wooden and composite deck flooring materials to be installed easily. Allows auto slope correction on surfaces maximum up to 5% gradient.

BS110



BS110-01 (75-125mm) 3"-5"	BS110-02 (120-170mm) 4 1/16"-6 1/16"	BS110-03 (170-218mm) 6 1/16"-8 1/16"	BS110-04 (214-262mm) 8 1/8"-10 1/16"	BS110-05 (263-312mm) 10 9/16"-12 1/4"	BS110-06 (307-356mm) 12 1/8"-14"	BS110-07 (357-405mm) 14 1/16"-16"	BS110-08 (400-450mm) 15 3/4"-17 3/4"	BS110-09 (450-500mm) 17 3/4"-19 1/16"	BS110-10 (495-543mm) 19 1/2"-21 3/8"
---------------------------------	--	--	--	---	--	---	--	---	--

BSW110



BSW110-04 (82-131mm) 3 1/4"-5 1/16"	BSW110-05 (125-175mm) 5"-7"	BSW110-06 (175-224mm) 7"-8 3/4"	BSW110-07 (219-270mm) 8 5/8"-10 5/8"	BSW110-08 (270-319mm) 10 5/8"-12 9/16"	BSW110-09 (313-362mm) 12 5/16"-14 1/4"	BSW110-10 (363-413mm) 14 5/16"-16 1/4"	BSW110-11 (407-455mm) 16"-18"	BSW110-12 (456-506mm) 18"-20"	BSW110-13 (500-550mm) 19 1/16"-21 5/8"
---	-----------------------------------	---------------------------------------	--	--	--	--	-------------------------------------	-------------------------------------	--

SL110



SL110-01 (85-135mm) 3 3/8"-5 1/16"	SL110-02 (130-180mm) 5 1/8"-7 1/16"	SL110-03 (180-228mm) 7 1/16"-9"	SL110-04 (224-272mm) 8 3/4"-10 1/16"	SL110-05 (273-322mm) 10 3/4"-12 1/16"	SL110-06 (317-366mm) 12 1/2"-14 7/16"	SL110-07 (367-415mm) 14 7/16"-16 3/8"	SL110-08 (410-460mm) 16 7/8"-18 1/8"	SL110-09 (460-510mm) 18 1/8"-20 1/16"	SL110-10 (505-553mm) 19 7/8"-21 3/4"
--	---	---------------------------------------	--	---	---	---	--	---	--

SLW110



SLW110-01 (85-135mm) 3 3/16"-5 1/16"	SLW110-02 (130-180mm) 5 1/8"-7 1/16"	SLW110-03 (180-228mm) 7 1/16"-9"	SLW110-04 (224-272mm) 8 3/4"-10 1/16"	SLW110-05 (273-322mm) 10 3/4"-12 1/16"	SLW110-06 (317-366mm) 12 1/2"-14 7/16"	SLW110-07 (367-415mm) 14 7/16"-16 3/8"	SLW110-08 (410-460mm) 16 7/8"-18 1/8"	SLW110-09 (460-510mm) 18 1/8"-20 1/16"	SLW110-10 (505-553mm) 19 7/8"-21 3/4"
--	--	--	---	--	--	--	---	--	---



**21 1/4" Maxi
(54 cm)**

BS110

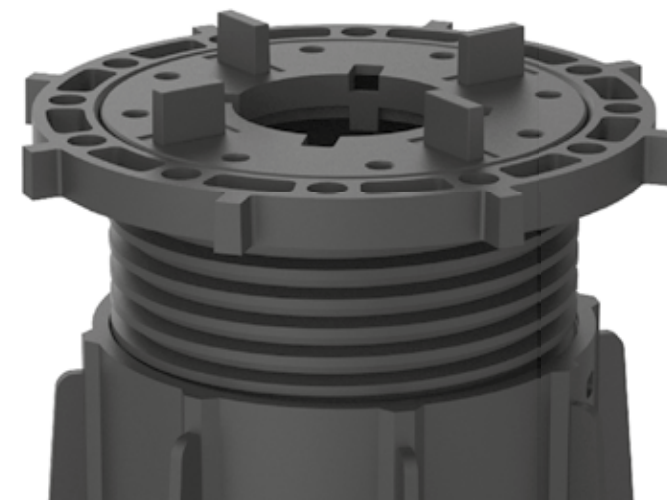
BS110 are used to create raised floors at varying heights from 3" (75mm) up to 21 1/4" (540mm) on flat or uneven surfaces.

Can be used to correct sloped surfaces maximum up to 5% gradient in order to be used with SLC001 self-leveling head.

Our products are made from 100% eco-friendly raw materials.

Withstand extreme weather conditions within temperature ranging from -40°F (-40°C) to 176°F (80°C).

Recommended the extension parts should be tightened up before they are installed.





W14002

Thickness adjustment in reciprocating direction

W14001

BSW110

BSW110 are designed for wooden and composite deck flooring materials. Compared with basic series supports BSW110 is preferred to make floors more elevated and withstand heavier loads.

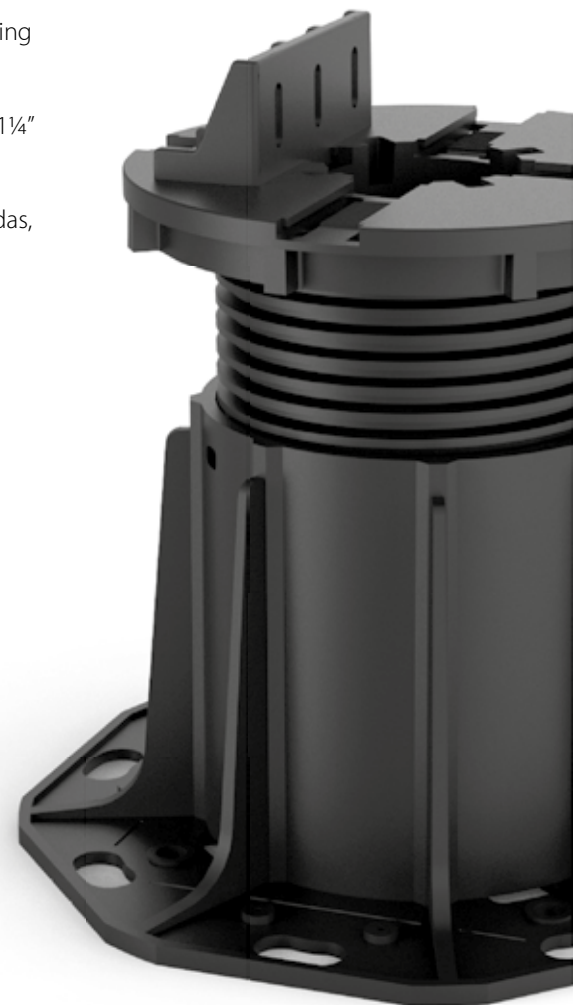
12

The W14002 adjustable part can be installed on floor joists in required thickness.

Thus, wooden or aluminum floor joists can be fixed to the supports and get a required flooring frame work on which the installation materials will be applied.

BSW110 can be used to create raised floors at varying heights from 3" (75mm) up to 21¼" (540mm) on flat or uneven surfaces.

Can be used safely in places such as terraces, balconies, rooftops, sun lounges, verandas, swimming pool areas, parks, villas where intense human traffic is available.



Maximum Slope

5%

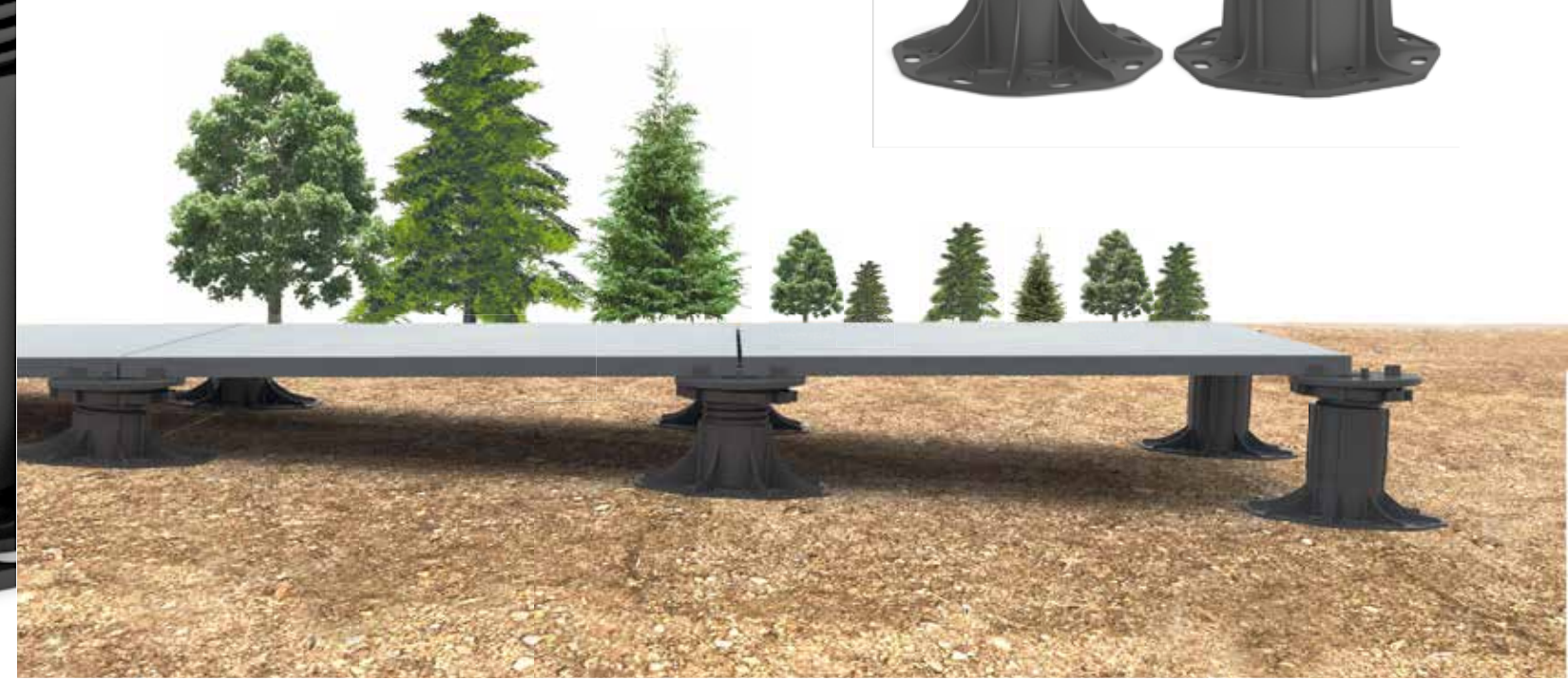


SLC001

SLC001 is a modular and compatible with both the Basic and Maxi Series. It is used to correct sloped surfaces up to 5% gradient. With 360° rotatable design it helps also to find the slope direction.



13

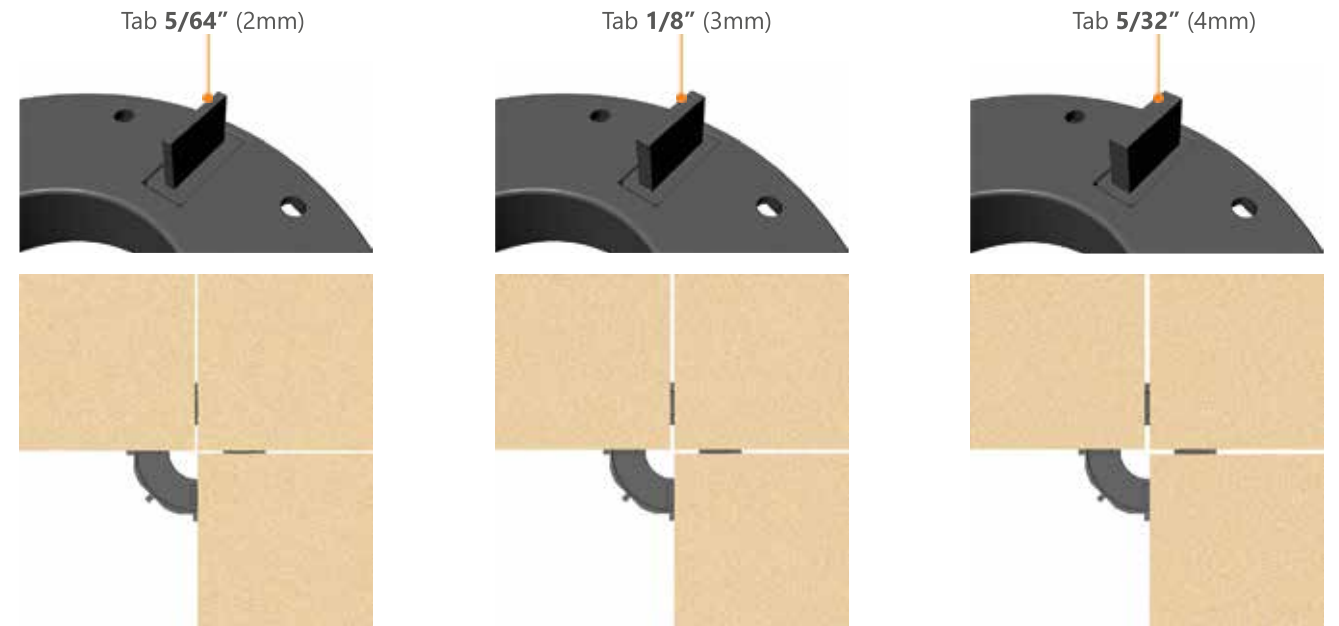




Lateral Flooring Installation

14 Lateral installation can be applied with a support and a lateral disc.

These accessories allow making lateral surface applications in raised floors. Open lateral surfaces can be easily covered with flooring materials.



Replaceable Spacer Tabs

All of the Basic, Maxi and SP Series use the same interchangeable tabs. These tabs can be replaced.

These tabs can be removed from their holes and replaced easily. It is not required to break the tabs on the disc. Allowing the modules to be used with different size of tabs in different places.

In outdoor applications it is recommended to use 5/32\" (4mm) of tabs in order to provide rapid rain water drainage.



15

Adjustment Tool

Initial adjustments can be made easily manually during installation, but after installing heavy flooring materials the adjustment process can not be made easily with hands. In that case, the adjustment tool provide ease of adjustment.



NOTES

A series of horizontal dotted lines for writing notes, spanning the width of the page below the 'NOTES' header.

DECOVITA-USA INC.

USA HEADQUARTERS & VIRGINIA SALES and DISTRIBUTION CENTER
45190 Prologis Plaza, Suite 190, Sterling, VA 20166
Office : (+1) 571 926 83 26

CALIFORNIA SALES and DISTRIBUTION CENTER
1623-1625 S. Sunkist St. Anaheim, CA 92806
Office : (+1) 714 406 15 00

TEXAS SALES and DISTRIBUTION CENTER
5870 W. Fuqua Street Suite #100 Houston Texas, 77085
Office: (+1) 281 915-0884

E-mail : info@decovitausa.com